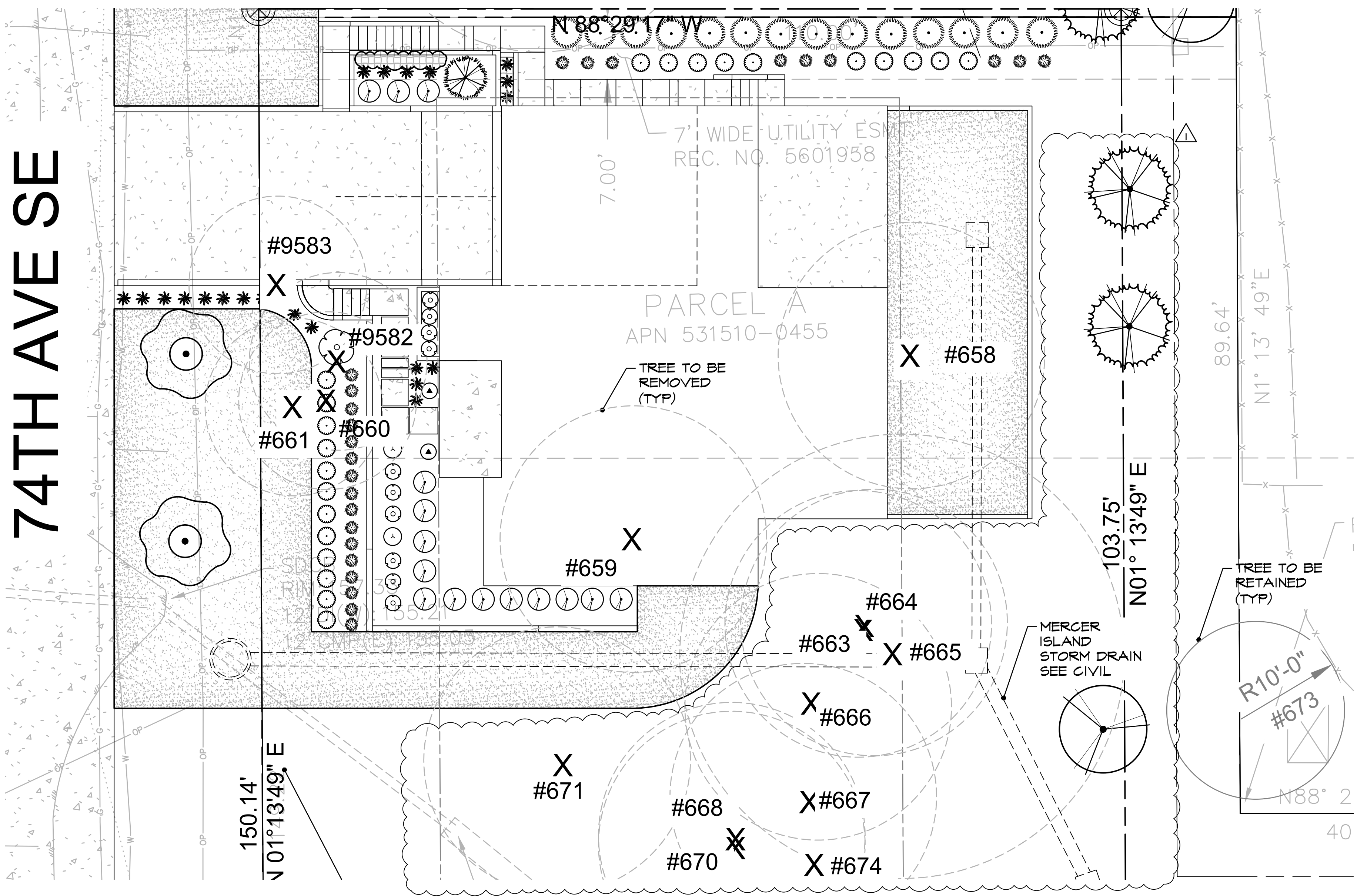
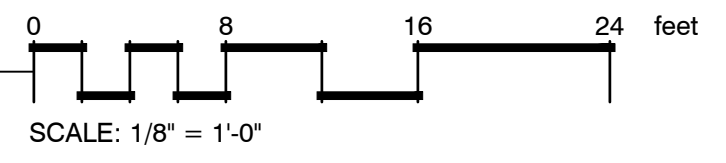


74TH AVE SE



LANDSCAPE PLAN

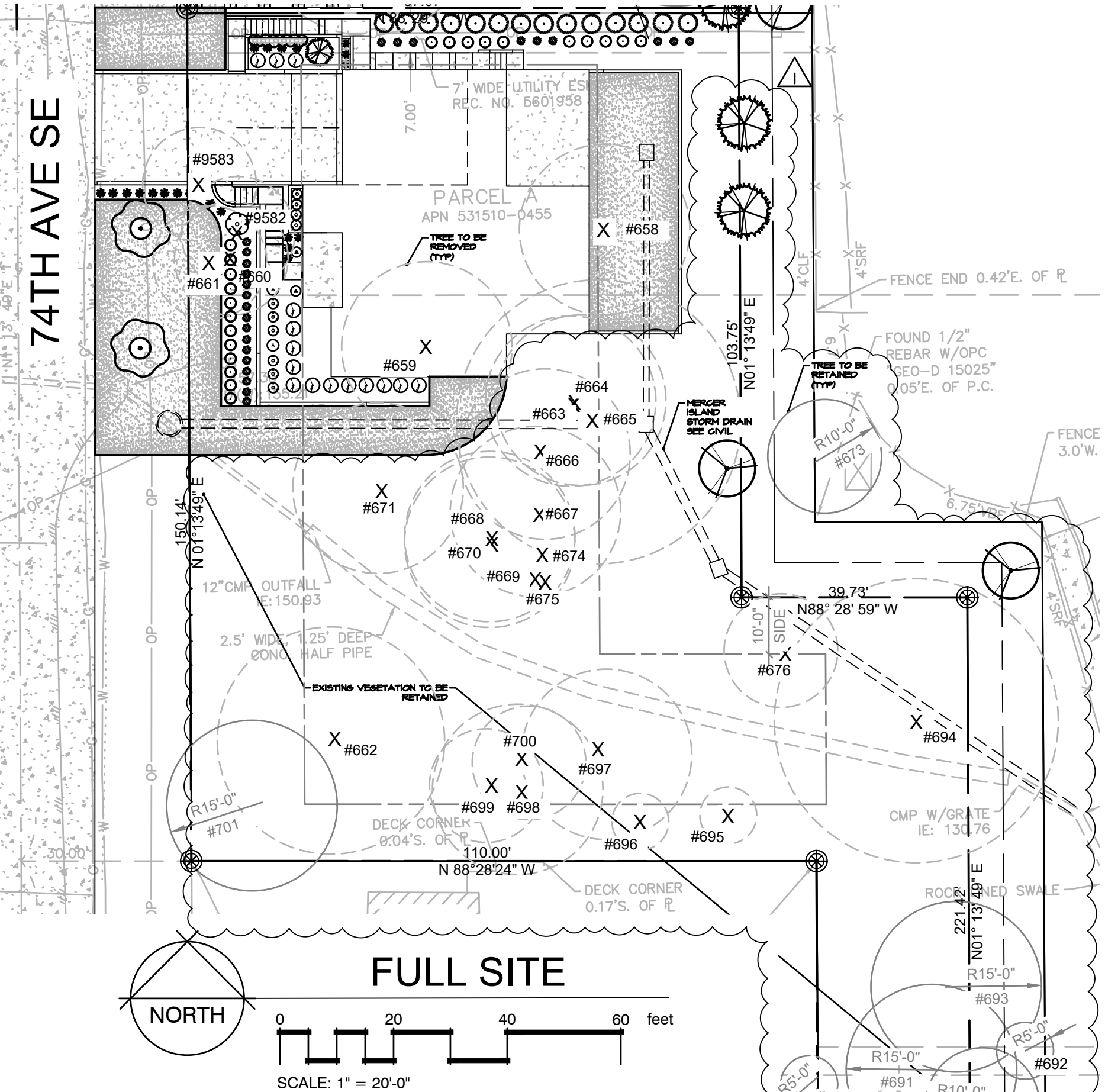


PLANT SCHEDULE 2436

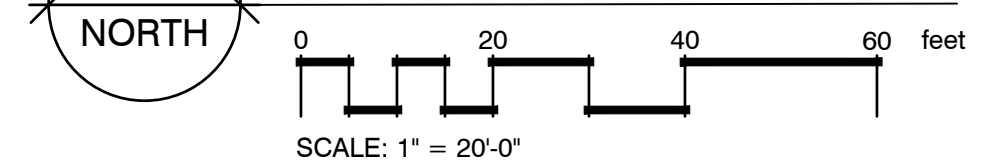
SYMBOL	BOTANICAL / COMMON NAME	SIZE	QTY
<b>TREES</b>			
	<i>Acer macrophyllum</i> / Big Leaf Maple Replacement Tree	1.5" Cal	8
	<i>Cornus</i> x 'KN30-B' / Venus Dogwood Street Tree - Single leader	2"-2.5" Cal B&B	2
	<i>Picea glauca pendula</i> / Weeping White Spruce	5'-6' Ht	1
	<i>Pseudotsuga menziesii</i> / Douglas Fir Replacement Tree	6' Ht.	5
	<i>Thuja plicata</i> / Western Red Cedar Replacement Tree	6' Ht.	2

PLANT SCHEDULE 2436

SYMBOL	BOTANICAL / COMMON NAME	SIZE	QTY
<b>SHRUBS</b>			
	<i>Calamagrostis x acutiflora</i> 'Karl Foerster' / Feather Reed Grass	5 gal	25
	<i>Evonymus japonicus</i> 'Lankveld03' / Paloma Blanca Japanese Evonymus	---	10
	<i>Hydrangea paniculata</i> 'Renyh' / Vanilla Strawberry Panicle Hydrangea	10 gal, on std.	1
	<i>Ligustrum japonicum</i> 'Texanum' / Texas Japanese Privet	3-Tier, 5 gal	2
	<i>Liriope muscari</i> 'Silvery Sunproof' / Silvery Sunproof Lilyturf	1 gal	22
	<i>Lonicera pileata</i> 'Moss Green' / Moss Green Honeysuckle	2 gal	22
	<i>Prunus laurocerasus</i> 'Otto Luyken' / Otto Luyken English Laurel	24" Ht. min.	15
	<i>Thuja occidentalis</i> 'Smaragd' / Emerald Green Arborvitae	4'-6' Ht	14
<b>PERENNIALS</b>			
	<i>Salvia x superba</i> / Perennial Sage	1 gal	2
<b>GROUND COVERS</b>			
	<i>Thymus praecox</i> 'Purple Carpet' / Mother of Thyme	4" pot	18" o.c. 12
	Turf Sod / Drought Tolerant Fescue Blend	sod	2,418 sq



FULL SITE



LANDSCAPE NOTES

- CONTRACTOR SHALL BE RESPONSIBLE FOR FAMILIARIZING THEMSELVES WITH ALL OTHER SITE IMPROVEMENTS AND CONDITIONS PRIOR TO STARTING LANDSCAPE WORK.
- CONTRACTOR SHALL USE CAUTION WHILE EXCAVATING TO AVOID DISTURBING ANY UTILITIES ENCOUNTERED. CONTRACTOR IS TO PROMPTLY ADVISE OWNER OF ANY DISTURBED UTILITIES. LOCATION SERVICE PHONE 1-800-424-5555.
- CONTRACTOR SHALL BE RESPONSIBLE FOR COMPUTING SPECIFIC QUANTITIES OF GROUND COVERS AND PLANT MATERIALS UTILIZING ON-CENTER SPACING FOR PLANTS AS STATED ON THE LANDSCAPE PLAN AND MINIMUM PLANTING DISTANCES AS SPECIFIED BELOW IN THESE NOTES.
- CONTRACTOR SHALL BE RESPONSIBLE FOR PROVIDING THE QUANTITIES OF PLANTS THAT ARE REPRESENTED BY SYMBOLS ON THE DRAWINGS.
- SUBGRADE IS TO BE WITHIN 1/4" OF ONE FOOT AS PROVIDED BY OTHERS. ALL PLANTING AREAS TO BE CLEARED OF ALL CONSTRUCTION MATERIAL AND ROCKS AND STICKS LARGER THAN 2" DIAMETER.
- IMPORT 8 INCHES OF COMPOST AMENDED TOPSOIL (25% COMPOST FOR TURF AREAS; 40% COMPOST FOR PLANTING BEDS). SCARIFY SUBSOIL 4" TO INCORPORATE WHERE FEASIBLE WITHOUT IMPACTING TREE ROOTS.
- 2" DEPTH ORGANIC MULCH IN ALL BED AREAS.
- ALL PLANT MATERIAL SHALL BE FERTILIZED WITH AGRO TRANSPLANT FERTILIZER 4-2-2 PER MANUFACTURER'S SPECIFICATIONS.
- ALL PLANT MATERIAL SHALL CONFORM TO AAN STANDARDS FOR NURSERY STOCK, LATEST EDITION. ANY REPLACEMENTS MADE AT ONCE.
- 9.A. GENERAL: ALL PLANT MATERIAL FURNISHED SHALL BE HEALTHY REPRESENTATIVES, TYPICAL OF THEIR SPECIES OF VARIETY AND SHALL HAVE A NORMAL GROWTH HABIT. THEY SHALL BE FULL, WELL BRANCHED, WELL PROPORTIONED, AND HAVE A VIGOROUS, WELL DEVELOPED ROOT SYSTEM. ALL PLANTS SHALL BE HARDY UNDER CLIMATIC CONDITIONS SIMILAR TO THOSE IN THE LOCALITY OF THE PROJECT.
- 9.B. TREES, SHRUBS, AND GROUND COVER: QUANTITIES, SPECIES, AND VARIETIES, SIZES AND CONDITIONS AS SHOWN ON THE PLANTING PLAN. PLANTS TO BE HEALTHY, VIGOROUS, WELL FOLIATED WHEN IN LEAF. FREE OF DISEASE, INJURY, INSECTS, DECAY, HARMFUL DEFECTS, AND ALL NEEDS. NO SUBSTITUTIONS SHALL BE MADE WITHOUT WRITTEN APPROVAL FROM LANDSCAPE ARCHITECT OR OWNER.
- ALUMINUM EDGING, PERMALOC OR APPROVED EQUAL, TO BE INSTALLED BETWEEN BARK AND COBBLE.

IRRIGATION: A TEMPORARY IRRIGATION SYSTEM IS REQUIRED FOR ALL REPLACEMENT TREES. EACH TREE TO BE IRRIGATED WITH DRIP BUBBLERS FOR A MINIMUM OF 5 YEARS. AFTER INITIAL PLANTING, DRIP SYSTEM SHOULD BE SCHEDULED TO RUN THREE DAYS A WEEK FOR 30 MINUTES MONITOR SOIL MOISTURE DAILY. AFTER ONE GROWING SEASON, SCHEDULE IRRIGATION TO RUN ONE DAY A WEEK DURING APRIL, MAY, SEPTEMBER AND OCTOBER. TWICE A WEEK FROM JUNE THROUGH AUGUST. SET THE RUN TIME BETWEEN 45-60 MINUTES. AFTER WATERING, CHECK THE SOIL MOISTURE AT THE ROOT (AT LEAST 6 INCHES DEEP) AND ADJUST THE RUN TIME IF NEEDED. -CHECK THE DRIP SYSTEM TWICE A MONTH TO ENSURE THE SYSTEM IS RUNNING PROPERLY. -HAND CLEAR AND GRUB A 3' DIAMETER RING OF ALL GRASS, WEEDS AND INVASIVE SPECIES AROUND EACH REPLACEMENT TREE AND INSTALL 3" DEPTH OF ARBORIST CHIP MULCH IN PLANTING RING.

Root of Design  
206.441.4545  
2020 Mailby Rd  
Ste 1, FMB 370  
Bothell, WA 98021  
www.rootofdesign.com



Devin Agee

PROJECT TITLE

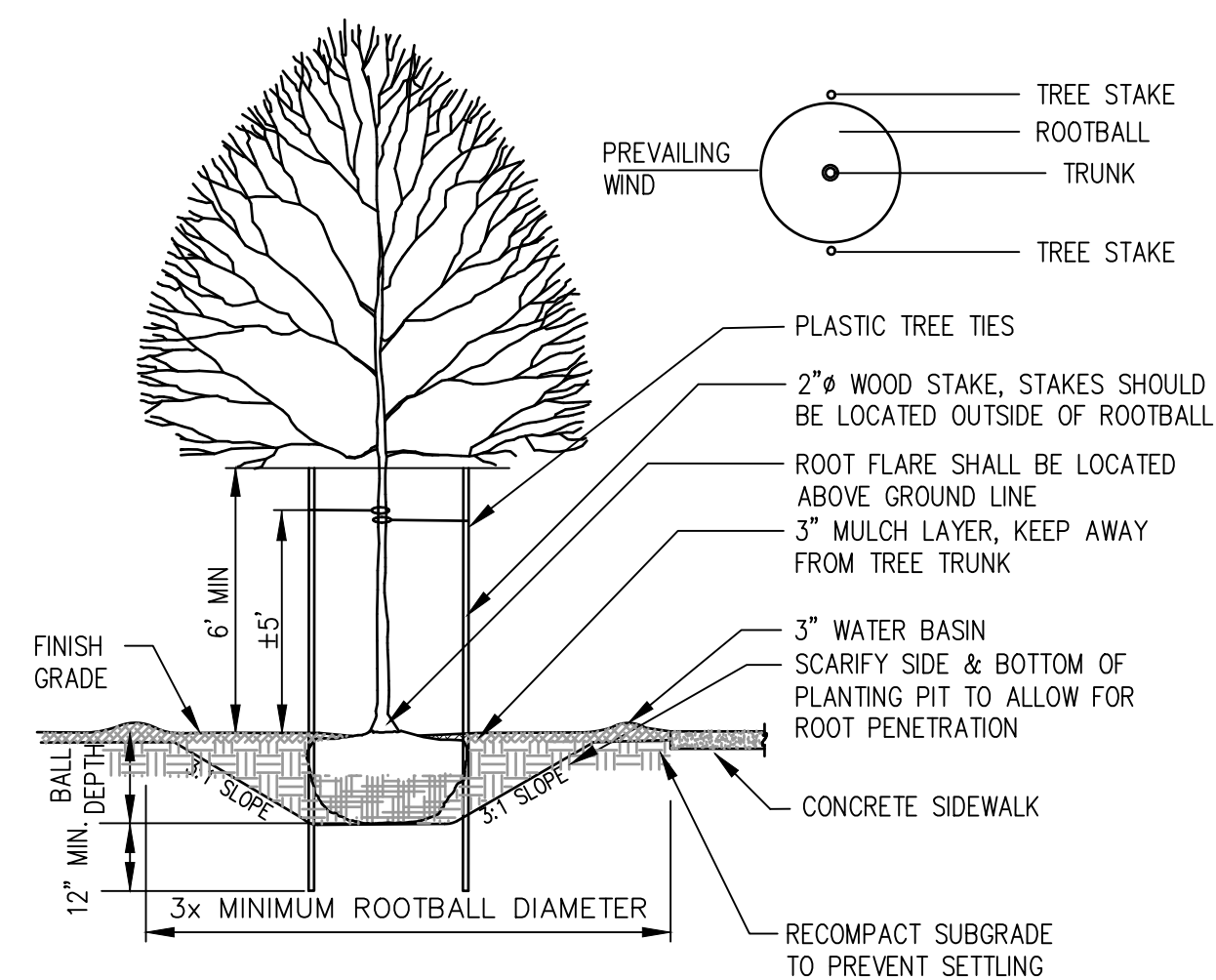
LANDSCAPE PLAN

2436 74TH AVE SE MERCER ISLAND, WA

DRAWN	DATE
KJ	08.02.24
REVISED	DATE
KJ	01.02.25

1/8" = 1'-0"

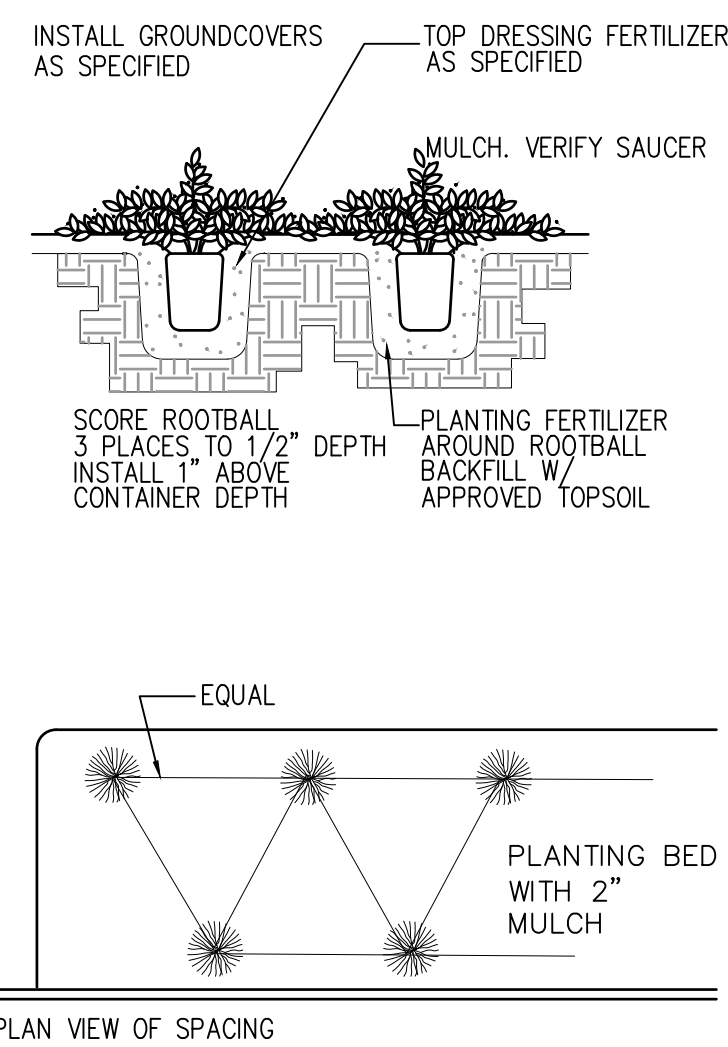
L1



**NOTES:**

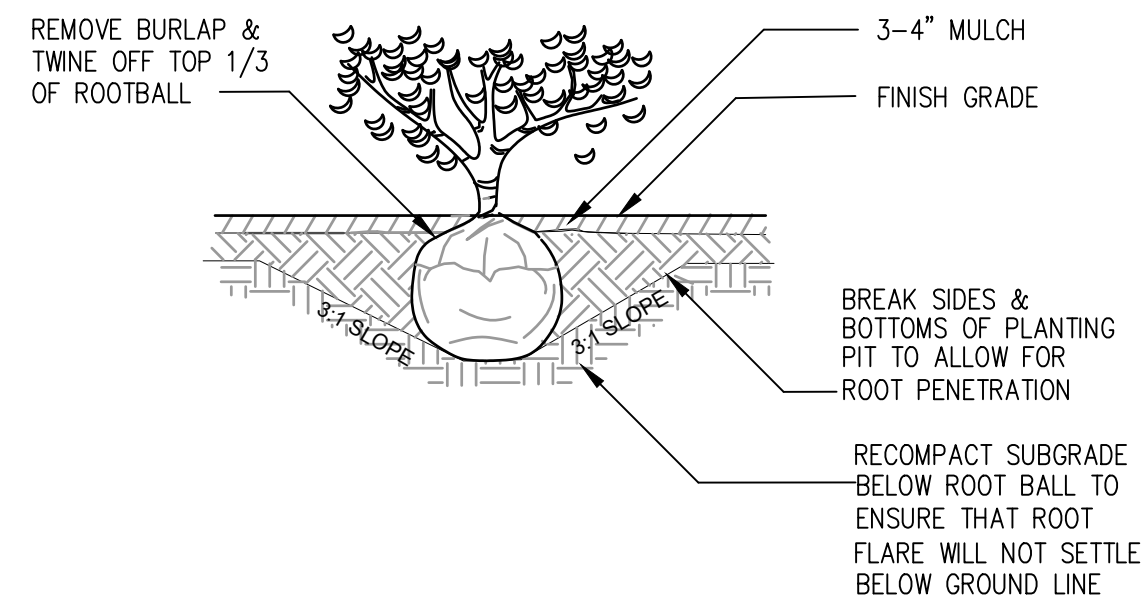
1. TREE PIT SHALL NOT BE LESS THAN (3) TIMES ROOT BALL DIA.
2. CUT ALL TIES AND FOLD BACK BURLAP FROM UPPER 1/3 OF ROOT BALL
3. REMOVE ALL PLASTIC AND TWINE
4. TREE STAKES PERPENDICULAR TO THE PREVAILING WIND
5. PLANT TREES 2" HIGHER THAN DEPTH GROWN IN NURSERY

**1** TYPICAL DECIDUOUS TREE PLANTING DETAIL  
NTS



PLAN VIEW OF SPACING

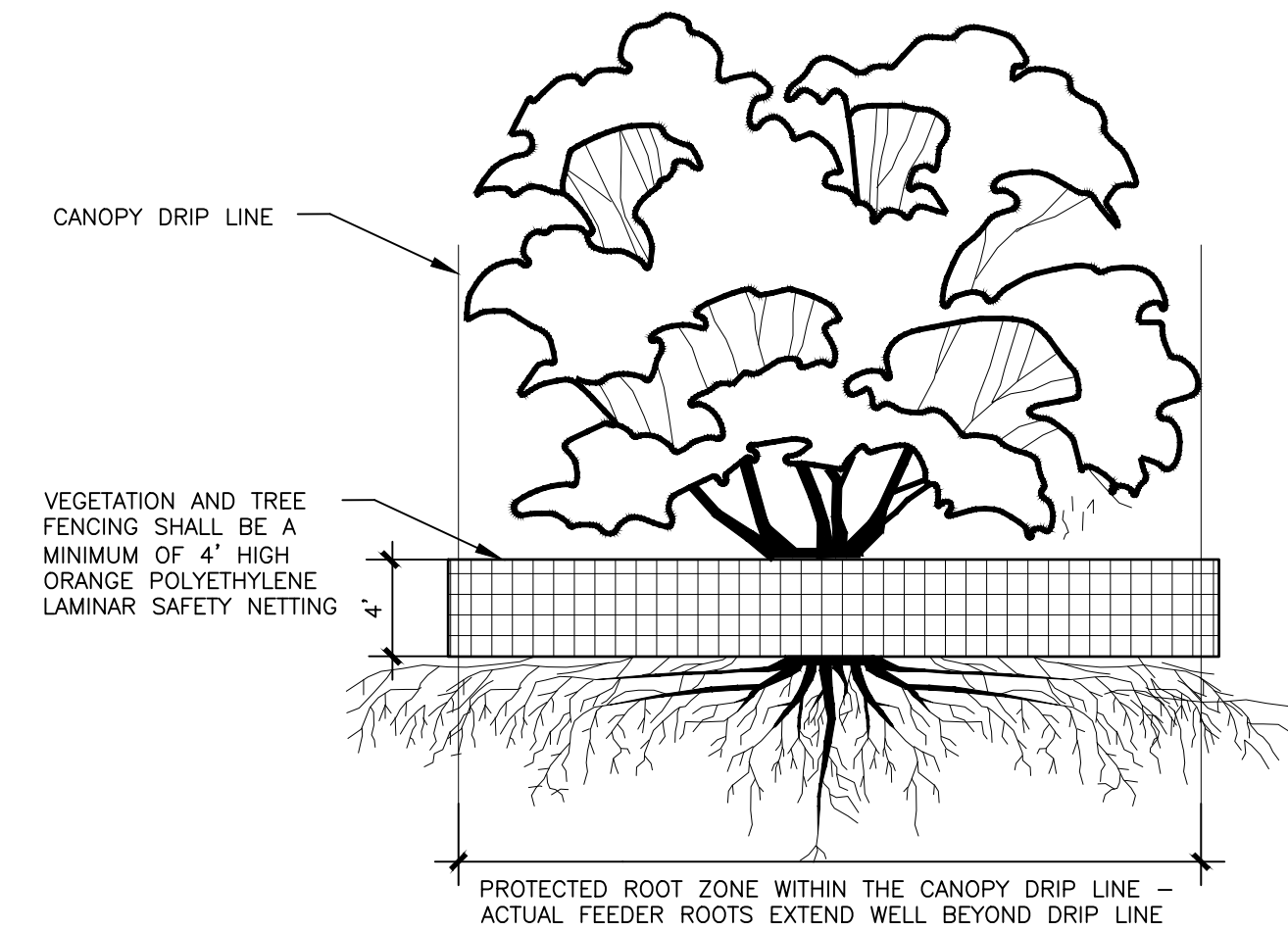
**2** TYPICAL GROUNDCOVER PLANTING DETAIL  
NTS



**3** TYPICAL SHRUB PLANTING DETAIL  
NTS

**NOTES:**

1. 3-INCH WOOD CHIP MULCH MAY BE ADDED FOR ROOT PROTECTION WITHIN FENCED AREA.
2. OUTSIDE OF PROTECTION FENCING AREA, PROTECT ROOTS 2-INCHES OR LARGER IN DIAMETER BY USING HAND EXCAVATION TECHNIQUES.
3. MINIMIZE CONSTRUCTION ZONE. PROTECT VEGETATION OUTSIDE CONSTRUCTION ZONE BY SEGREGATING IT WITH HIGH VISIBILITY CONSTRUCTION FENCING.



**4** TREE PRESERVATION DETAIL  
NTS

Root of Design  
206.441.4545  
2020 Maitby Rd  
Ste 1, FMB 370  
Bothell, WA 98021  
www.rootofdesign.com



Devin Agee

PROJECT TITLE

**LANDSCAPE DETAILS**

2436 74TH AVE SE MERCER ISLAND, WA

DRAWN DATE 08.02.024

REVISED DATE 01.02.25

NTS

**L2**